

BELT CHILLER

New Innovative Design

Reduce Your Carbon Footprint with the DCN Belt Chiller.

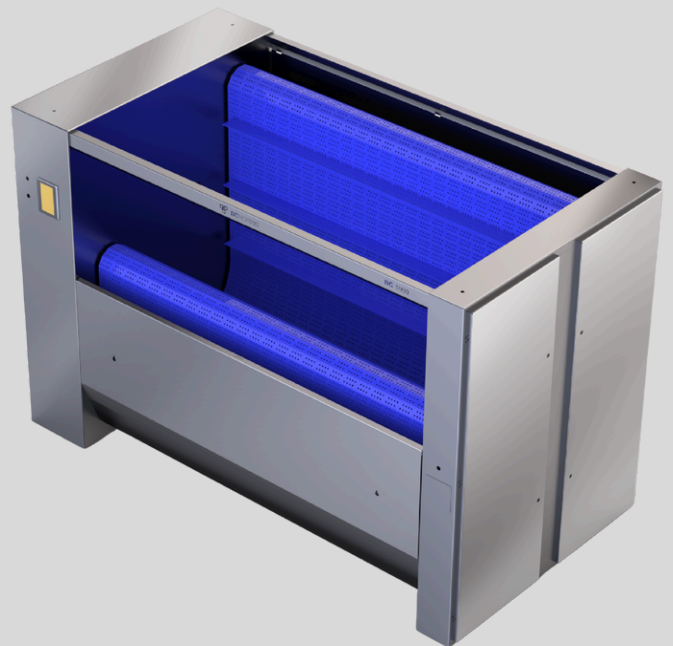
Engineered for optimum performance with minimal energy and water use, the Belt Chiller enhances efficiency across the Cook Chill process.

A flighted belt gently massages filled bags through chilled water, with an overhead spray ensuring rapid, even cooling. At the end of the cycle, bags are automatically lifted and deposited directly into tote bins.

Recycled water is used across multiple batches, removing the need for surge tanks and enabling immediate re-use—delivering faster processing, lower labour costs, and significant production savings.

Features

- ❖ Reduced processing times
- ❖ Fast unloading time
- ❖ Removes the need for manual labour preventing RSI issues
- ❖ Energy saving design
- ❖ Small footprint
- ❖ Simple to maintain - no rotating shaft seals
- ❖ Self-contained heat exchanger and controls with back flush for cleaning



- ❖ Unique massaging & bag handling features
- ❖ Automatic self-unloading. (2 x standard Tote Bins)
- ❖ In-line Jet heater for self-cleaning
- ❖ Small efficient pump
- ❖ Accommodates different batch sizes and delicate products
- ❖ Chilled water spray

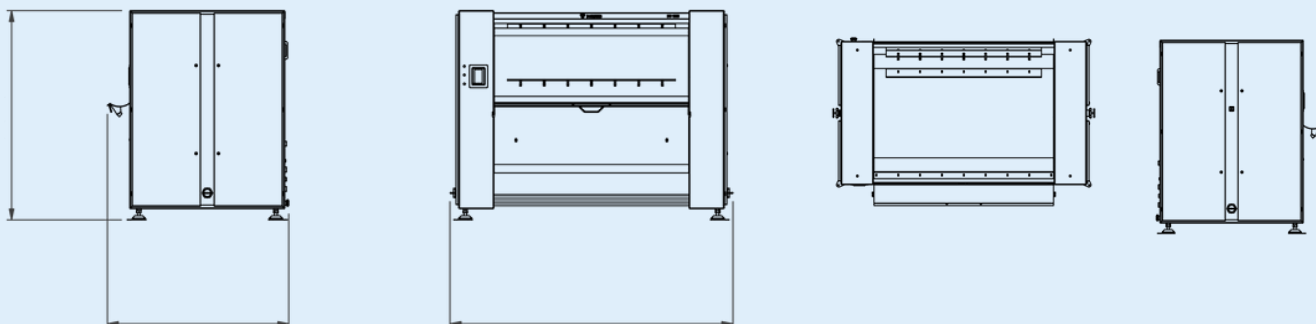
Option

Automatic Loading with Model 400 Heat Seal Pump Fill Station - adjustable drop height and Integral auto position chute.

BELT CHILLER

New innovative Design

TECHNICAL DATA



Service Requirements

Electrical	400/3/50 (or country specific)
Current	16A (500 L) / 22A (1000/1500 L)
Compressed Air	0.1 m ³ /hr @ 5 bar
Mains Water	100 (500L) / 200 (1000/1500L) ltrs/min @ 3 bar
Steam (Cleaning)	100kg/hr @ 4 bar
Glycol	250 ltrs/min @ 0-1°C

Overall Dimensions - 500ltr (mm)

Height	1995
Width	1829
Depth	1547
Weight (kg)	1057

Overall Dimensions - 1000ltr (mm)

Height	1995
Width	2939
Depth	1547
Weight (kg)	1527

The Belt Tumble Chiller is available in 3 standard sizes
500 Litre, 1000 Litre & 1500 Litre.



Overall Dimensions - 1500ltr (mm)

Height	2375
Width	3214
Depth	1814
Weight (kg)	2430



DC Norris & Company Ltd

Sand Road Industrial Estate, Great Gransden,
Nr. Sandy, Bedfordshire, SG19 3AH, UK
T: +44 (0)1767 677515 | E: info@dcnorris.com



www.dcnorris.com