

BELT CHILLER

New innovative Design



Cools liquid foods from 85°C to below 4°C in 30-60 minutes for extended shelf-life.

Reduce carbon footprint with the new Belt Chiller - optimum performance whilst using the minimum amount of energy and water!

Designed to improve efficiency with faster cooling and unloading; the Belt Chiller gives food producers savings on overall production times, costs and labour.

A flighted belt massages filled Cook Chill bags whilst circulating them in chilled water, water is also sprayed on top of the bags during the cycle.

The self-unloading system lifts bags out of the water and deposits them directly into the customers tote bins at the end of the cooling cycle.

Chilled water is recycled for multiple batches, removing the requirement of a surge tank for emptying and re-filling. The Chiller is simply ready to be re-used as soon as a batch has been unloaded.



*Cooling times dependent on product and bag type



Features

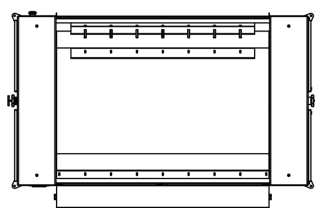
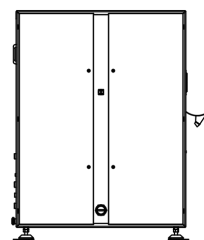
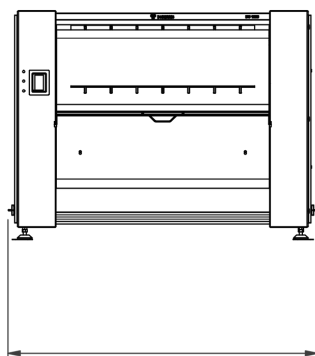
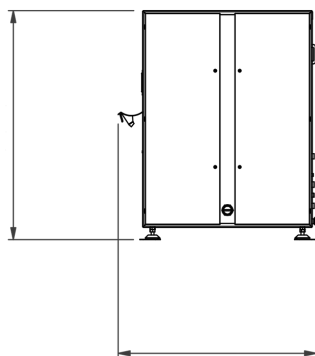
- Rapid cooling times.
- Fast unloading time.
- Removes the need for manual labour preventing RSI issues.
- Water is re-cycled for multiple batches & less water required per batch.
- Energy saving design.

- Unique massaging & bag handling features.
- Automatic self-unloading. (2 x standard Tote Bins)
- In-line Jet heater for self-cleaning.
- Small efficient pump.
- Accommodates different batch sizes and delicate products.
- Chilled water spray.

- Self-contained heat exchanger and controls with back flush for cleaning
- Small footprint.
- Simple to maintain - no rotating shaft seals.

Options:

- **Automatic Loading Option with** Model 400 Heat Seal Pump Fill Station - adjustable drop height and Integral auto position chute.



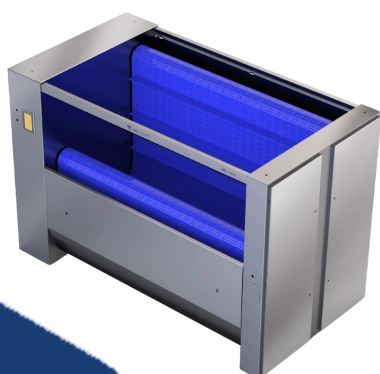
Service Requirements	
Electrical	400/3/50 (or country specific)
Current	16A (500 L) / 22A (1000/1500 L)
Compressed Air	0.1 m ³ /hr @ 5 bar
Mains Water	100 (500L) / 200 (1000/1500L) ltrs/min @ 3 bar
Steam (Cleaning)	100kg/hr @ 4 bar
Glycol	250 ltrs/min @ 0-1°C

Overall Dimensions - 500ltr (mm)	
Height	1995
Width	1829
Depth	1547
Weight (kg)	1057

Overall Dimensions - 1000ltr (mm)	
Height	1995
Width	2939
Depth	1547
Weight (kg)	1527

Overall Dimensions - 1500ltr (mm)	
Height	2375
Width	3214
Depth	1814
Weight (kg)	2430

The Belt Tumble Chiller is available in 3 standard sizes
500kg-1500kg.



DC Norris & Company Ltd

Sand Road Industrial Estate, Great Gransden,
Nr. Sandy, Bedfordshire, SG19 3AH, UK
T: +44 (0)1767 677515 | E: info@dcnorris.com

